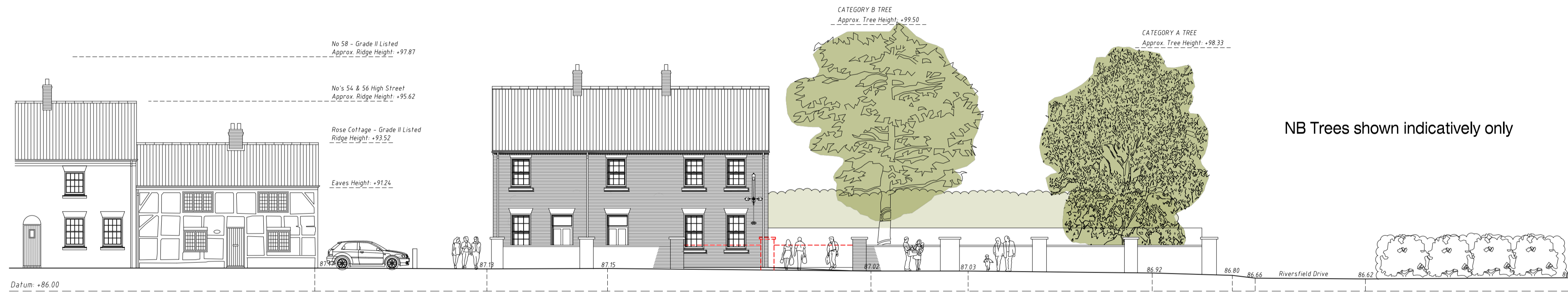


NB Trees shown indicatively only

Existing Streetscene from High Street Scale 1:150 - Viewing South



NB Trees shown indicatively only

Proposed Streetscene from High Street Scale 1:150 - Viewing South



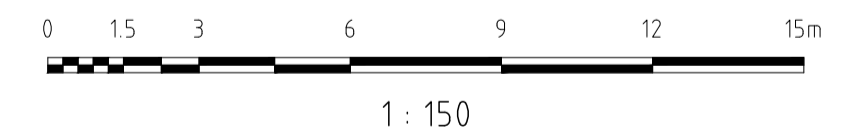
NB Trees shown indicatively only

Existing Streetscene from Riversfield Drive Scale 1:150 - Viewing East



NB Trees shown indicatively only

Proposed Streetscene from Riversfield Drive Scale 1:150 - Viewing East



Planning Drawing

Rev A	16.01.23	Proposed Streetscenes updated to match elevation dwg 21-1875/11b	DB
rev.	date		drawn/chk'd

Gould Singleton Architects
 Earls Way, Halesowen, West Midlands, B63 3HR
 Tel: 0121 550 0359 Fax: 0121 550 8088
 e-mail: info@gould-singleton.co.uk

number drawn	1:150@A1	Land off High Street Rocester Uttoxeter ST14 5JU	P/2022/00302 AMENDED Received 16.01.2023
date	Feb 2022		
drawn	DB	GSA	Proposed Streetscene Elevations
checked			
number	21-1875/12a		

This drawing and the building works depicted are the copyright of the Architects and may not be reproduced except by written permission. This drawing must be read and checked against any specialist drawings and information provided. Do not scale prints. Figured dimensions only to be taken from this drawing.